



*In partnership with*

## GENERAL FOUNDATION PROGRAMME

# PLACEMENT TEST SAMPLE QUESTION PAPER

ACADEMIC YEAR 2018 – 2019

## FURTHER ICT

### Introductory remarks:

- Please answer all questions within the allocated time period of 90 minutes.
- Mark your correct answers on the extra sheet which is provided with the questions. No marks will be given for rough work, remarks or other contributions.
- Please leave all items on the desk at the end of the test.

Instructions for students.

Attempt all questions. Each question carries equal marks

Question # 1: Multiple choice questions

20 Marks

- 1- The process of a computer receiving information from a server on the Internet is known as
  - a. Pulling
  - b. Uploading
  - c. Downloading
  - d. Transferring
  
- 2- A keyboard is this kind of device:
  - a. Output
  - b. Input
  - c. Word processor
  - d. None of the above
  
- 3- Data stored on computer is in the form of
  - a. Text
  - b. Image
  - c. Number
  - d. Audio
  
- 4- WAN stands for
  - a. Wap Area Network
  - b. Wide Area Network
  - c. Wide Array Net
  - d. Wireless Area Network
  
- 5- A part of the computer that all other parts are connected to. It allows all of the parts to communicate so they work together
  - a. Operating System
  - b. Disk Drive
  - c. Output Device
  - d. Motherboard
  
- 6- The physical parts of a computer
  - a. Hardware
  - b. Hard Drive
  - c. Disk Drive
  - d. Software

- 7- Which of the following is a storage device?
- Tape
  - Hard Disk
  - Floppy Disk
  - All of the above
- 8- Parallelogram symbol in flow chart represents
- Start
  - Input
  - Processing
  - Decision
- 9- ALU stand for
- Array Logic Unit
  - Application Logic Unit
  - Arithmetic Logic Unit
  - None of the above
- 10- Where are data and programme stored when the processor uses them
- Main memory
  - Secondary memory
  - Disk memory
  - Programme memory

**Question # 2:** Differentiate between the following terms

- Pseudocode and Algorithm
- Local Area Network (LAN) and Wide Area Network (WAN)
- Integer Data Type and Character Data Type
- System Software and Application Software
- Random Access Memory (RAM) and Read Only Memory (ROM)

20 Marks

**Question # 3:** Mr Mobile is a mobile repair service shop, which provides mobile repairing services. The charges of mobile repair are based on the type of the fault. Details of charges for each fault are as follow:

Software Fault:	4 OMR
Screen Fault:	6 OMR
Network/Wi-Fi Fault:	8 OMR
Internal Hardware Fault:	10 OMR

You are required to draw a flow chart diagram or write an algorithm for a computer program that takes customer name, contact number and fault type. The program outputs a receipt with all the entered information plus repair charges on the basis of the type of fault.

20 Marks

**Question # 4:** Problem solving is easier if we employ a systematic approach by using a framework and an appropriate problem solving strategy. Following questions are related to problem solving.

a). Explain the 6 different steps of How to think like a programmer framework?

10 Marks

b). Computer carry out a variety of tasks on our behalf e.g. Check our spelling, download a web page, play a music file. In order to carry out these tasks, a computer needs a set of detailed instructions. These instructions are called a program. **Explain three different stages of computer programming.**

10 Marks

**Question # 5:** A topology is a way of “laying out” the network. Bus, Star, Ring and Mesh are the different network topologies. Answer the following questions related to network topologies.

a). Write 2 advantage and 2 disadvantage of each of these four network topologies.

b). Figures 1 to 4 below are the graphical representations of the network topologies. Identify and list the name of topology for each figure.

1.

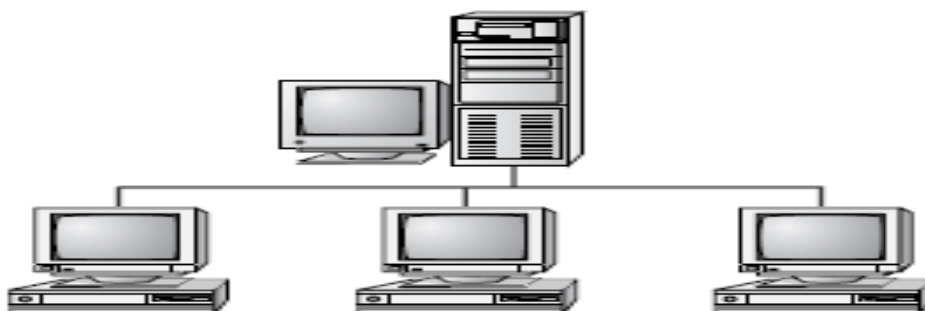


Fig 1

2.

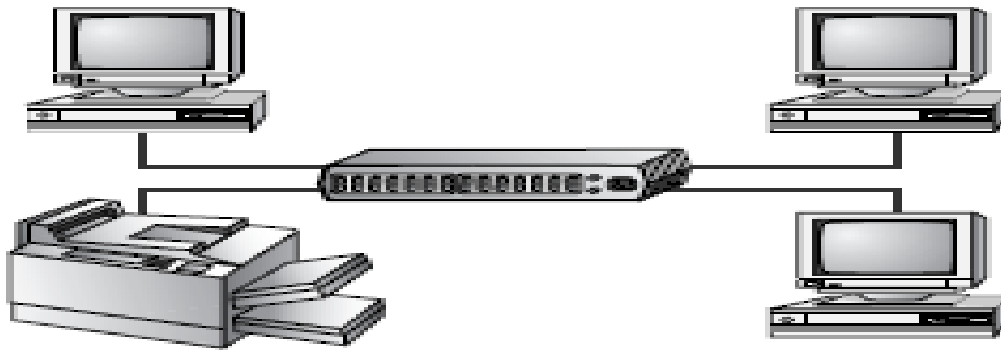


Fig 2

3.

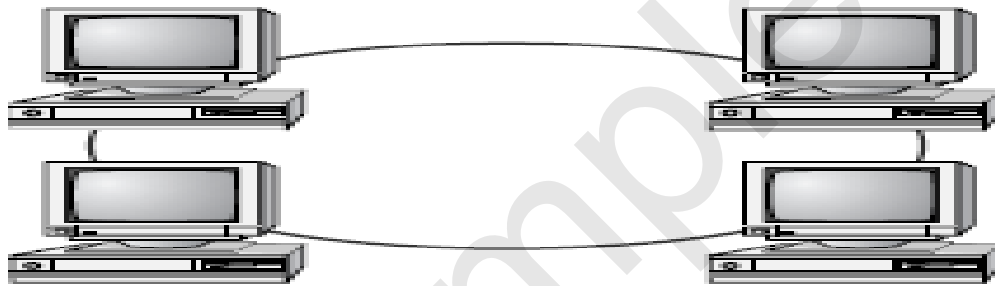


Fig 3

4.

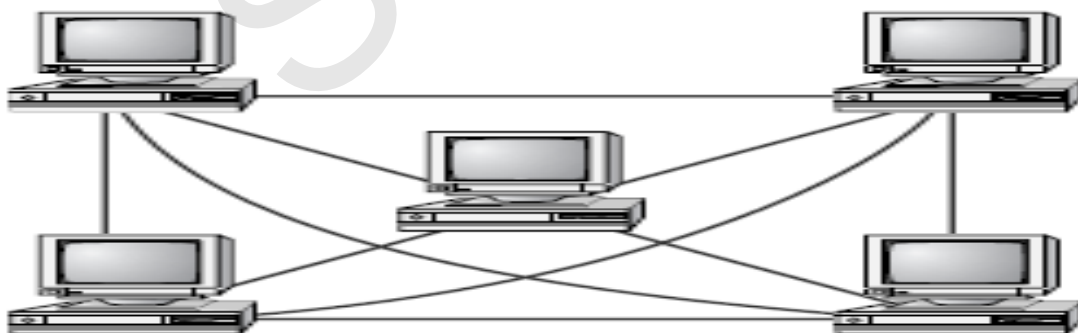


Fig 4

20 Marks

End of Exam